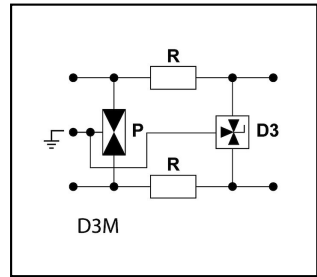
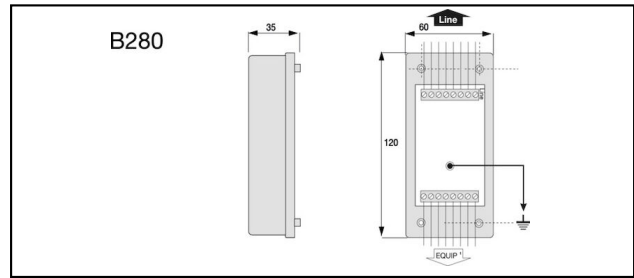





Informatics, Telecommunication

B 280 Surge protection



**Characteristics**  
Citel B 180 and B 280 surge protectors have been designed to protect your single and dual telephone and data lines against harmful lightning surges and electrical transients. The two-staged protection circuit consists of a combination of powerful gas-tube technology and fast switching diodes. These compact boxes are designed for wall mounting and screw connection.

Article-Nr.	E-Number			<div>kA<i>i<sub>n</sub></i></div>	<div>kA<i>I<sub>max</sub></i></div>	<div>kV<i>U<sub>P</sub></i></div>				
296.072.774	970 523 003	ADSL	4	5	20	0.07				1

Technical Specifications:
 **Surge protection B 280**

Article No.	296.072.774
Number of wires	4
Continuous voltage DC max.	53 V
Signal - maximum continuous voltage AC	37 V
Operating voltage max. [UcDC]	53 V
Applications with interface	ADSL
Nominal line voltage Un DC	48 V
Continuous voltage AC max.	38 V
Impulse current [Iimp]_(10/350)	2.5 kA
Nominal discharge surge current (8/20)	5 kA
Nominal load current	0.3 A
Voltage protection level [Up]	0.07 kV
Response time [ta]	<1
Fault indication	Kurzschluss
Temperature range	-40 - 80 °C
Dimensions	Siehe Massbild
Signaling on the device	None
Signal frequency	10 MHz
Discharge current max. [Imax]	20 kA
Connector (information technology)	Clamp
Nominal cross section conductor	0.4 - 1.5 mm²
Nominal discharge current [In]	5
Signal nominal load current	0.3 A
Mounting method	Other
With remote signalling contact	No
Degree of protection (IP)	IP20
Standards	
Test standards International	IEC 61643-21
Test standards USA	UL497A
Commercial specification	
Customs number	85363000
country of origin	undefined
Logistic specification	
VPE Weight	0.184 kg

