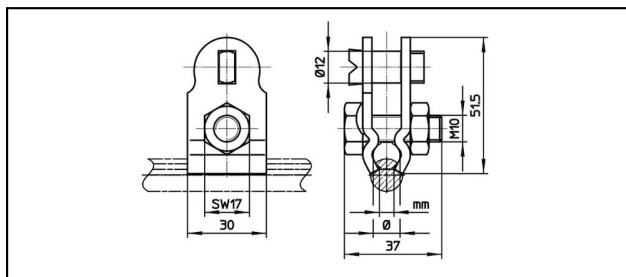


Seilhängerklappen

■ **SKTF1** Tragseil- und Fahrdrahthängerklemme**Anwendung**


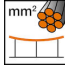
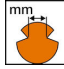

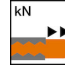

Für Seilhänger, stromführend / nicht stromführend

Eigenschaften

Anziehdrehmoment 20-25 Nm

Material

Körper aus CuNiSi

Artikel-Nr.									
625.008.147	13 - 16	95 - 150	3.75 - 8.5	57	3.5				0.183

Technische Spezifikationen: **Tragseil- und Fahrdrahthängerklemme SKTF1**

Artikel-Nr.	625.008.147
Länge a	57 mm
Fahrdraht-Kerbe	3.75 - 8.5 mm
Tragseil Durchmesser	13 - 16 mm
Tragseile Seilfläche	95 - 150 mm ²
Ausreisskraft	3.5 kN
Anziehdrehmoment 2	20 - 25 N·m
Kommerzielle Spezifikation	
Zolltarifnummer	85359020
Ursprungsland	CH

