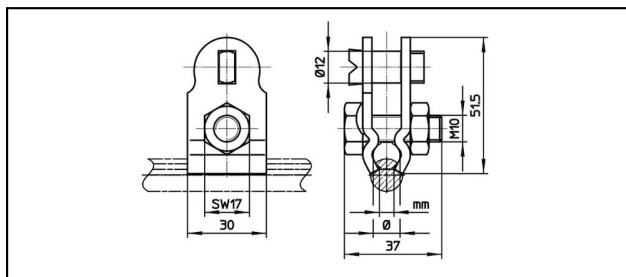


## Seilhängerklammern

■ **SKTF1** Tragseil- und Fahrdrahthängerklemme**Anwendung**


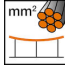
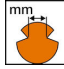

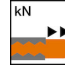

Für Seilhänger, stromführend / nicht stromführend

**Eigenschaften**

Anziehdrehmoment 20-25 Nm

**Material**

Körper aus CuNiSi

Artikel-Nr.									
625.009.152									

Technische Spezifikationen: **Tragseil- und Fahrdrahthängerklemme SKTF1**

Artikel-Nr.	625.009.152
-------------	-------------

