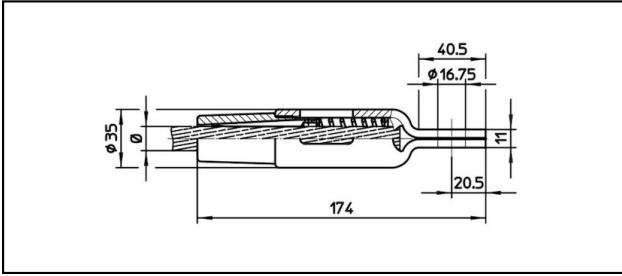
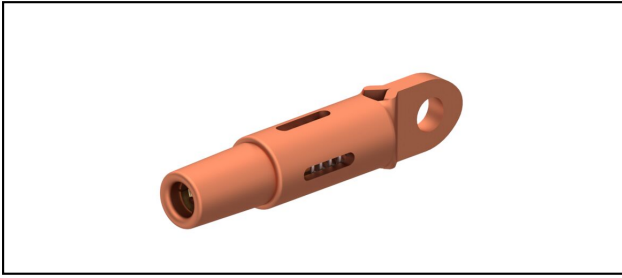


## Ösenendmuffen CuNiSi

### ■ OCK174 Ösenendmuffe



#### Anwendung

Zugfeste Verbindung für Leiter aus Cu, Staku oder Bz


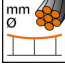
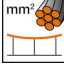
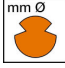


#### Eigenschaften

Betriebslast min. 3 kN / max. 25 kN

Bruchlast des Gehäuses min. 80 kN

#### Material

Gehäuse CuNiSi / Konus AlBz

Artikel-Nr.										
615.160.105	S120	14	120							0.64

Technische Spezifikationen: **Ösenendmuffe OCK174**

Artikel-Nr.	615.160.105
<b>Bahn Produkt Name</b>	S120
<b>Tragseil Durchmesser</b>	14 mm
<b>Tragseil Seilfläche</b>	120 mm <sup>2</sup>
Kommerzielle Spezifikation	
<b>Zolltarifnummer</b>	85359000
<b>Ursprungsland</b>	CH
Logistische Spezifikation	
<b>Kilo / Stück</b>	0.64 kg

