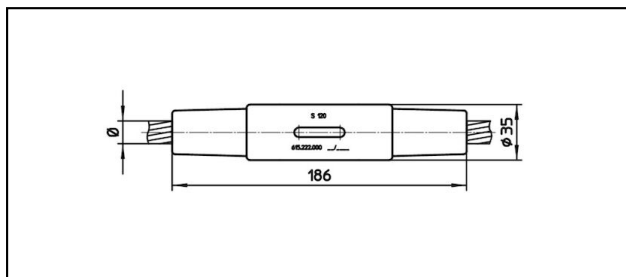


Konusverbinder

■ KV186 Konusverbinder



Anwendung


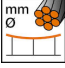

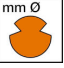

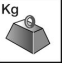

Zug- und stromfeste Verbindungen für Leiter aus Cu, Bz, Stahl und Staku

Eigenschaften

Betriebslast min. 3 kN / max. 25 kN
Bruchlast des Gehäuses min. 80 kN

Material

Gehäuse CuNiSi / Konus AlBz bzw. Stahl rostfrei

Artikel-Nr.									
615.006.106	S150	15.75	150					0.76	

Technische Spezifikationen: **Konusverbinder KV186**

Artikel-Nr.	615.006.106
Bahn Produkt Name	S150
Tragseil Durchmesser	15.75 mm
Tragseile Seilfläche	150 mm ²
Kommerzielle Spezifikation	
Zolltarifnummer	85359020
Ursprungsland	CH

