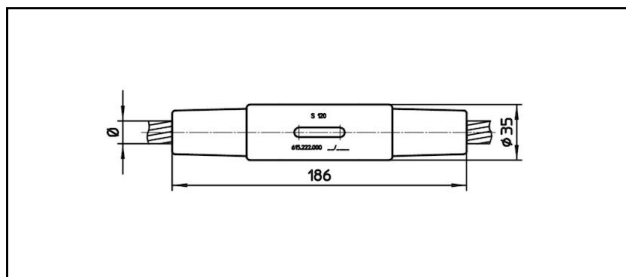


Konusverbinder

■ KV186 Konusverbinder



Anwendung


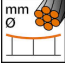

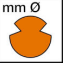

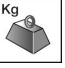

Zug- und stromfeste Verbindungen für Leiter aus Cu, Bz, Stahl und Staku

Eigenschaften

Betriebslast min. 3 kN / max. 25 kN
Bruchlast des Gehäuses min. 80 kN

Material

Gehäuse CuNiSi / Konus AlBz bzw. Stahl rostfrei

Artikel-Nr.									
615.215.000	S120	14.5	120					0.78	1

Technische Spezifikationen: **Konusverbinder KV186**

Artikel-Nr.	615.215.000
Bahn Produkt Name	S120
Tragseil Durchmesser	14.5 mm
Tragseile Seilfläche	120 mm ²
Kommerzielle Spezifikation	
Zolltarifnummer	85359020
Ursprungsland	CH

