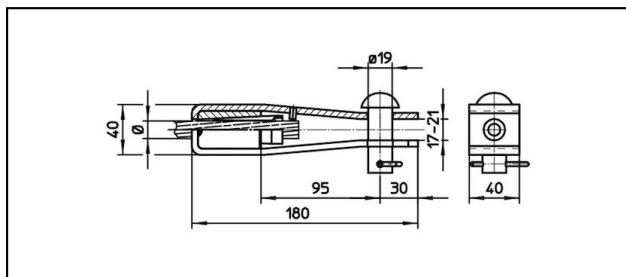


## Gabelendmuffen

### ■ GI40/40,B19 Spc. Gabelendmuffen



#### Anwendung


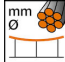
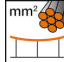
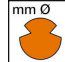


Zugfeste Verbindungen für Leiter aus Cu, Bz, Stahl oder Staku

#### Eigenschaften

Betriebslast min. 3 kN / max. 25 kN  
Bruchlast des Gehäuses min. 60 kN

#### Material

Gehäuse Stahl rostfrei / Konus AIBz / Bolzen Stahlverzinkt

| Artikel-Nr. |  |  |  |  |  |  |  |  |  |  |
|-------------|---|---|---|---|---|--|--|--|--|---|
| 610.095.000 | S95   | 12.9  | 95  |   |   |  |  |  |  | 0.91  |

Technische Spezifikationen: **Gabelendmuffen GI40/40,B19 Spc.**

|                             |                    |
|-----------------------------|--------------------|
| Artikel-Nr.                 | 610.095.000        |
| <b>Bahn Produkt Name</b>    | S95                |
| <b>Tragseil Durchmesser</b> | 12.9 mm            |
| <b>Tragseile Seilfläche</b> | 95 mm <sup>2</sup> |
| Kommerzielle Spezifikation  |                    |
| <b>Zolltarifnummer</b>      | 0                  |
| <b>Ursprungsland</b>        | unbestimmt         |

