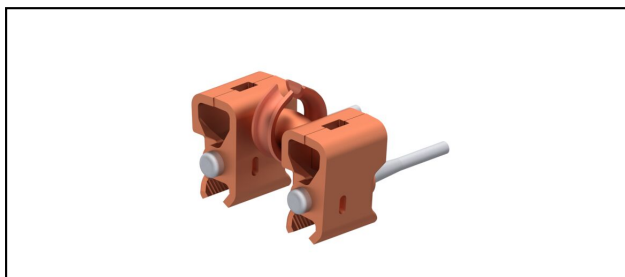


Seilhängerklappen

■ **SKDF7** Doppel-Fahrdrahthängerklappe**Anwendung**

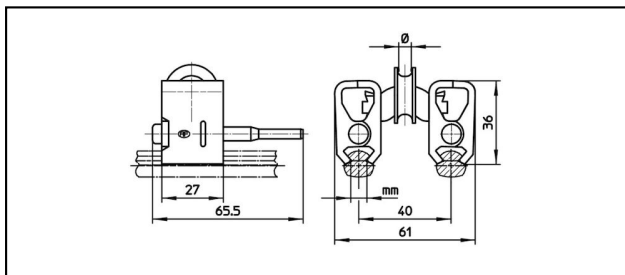
Für Seilhänger, nicht stromführend

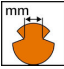
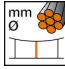
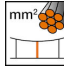
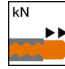

Eigenschaften

Andere Fahrdrahtkerben auf Anfrage

Material

KörperCuNiSi / Kausche Cu



| Artikel-Nr. |  |  |  |  | | | | |  |
|-------------|---|---|---|---|--|--|--|--|---|
| 625.027.001 | 6.05 | 4.5 | 10 | 5 | | | | | 0.186 |

Technische Spezifikationen: **Doppel-Fahdrahthängerklammer SKDF7**

| | |
|-------------------------------|--------------------|
| Artikel-Nr. | 625.027.001 |
| Fahdraht-Kerbe | 6.05 mm |
| Hängerseil Durchmesser | 4.5 mm |
| Hängerseil Fläche | 10 mm ² |
| Ausreisskraft | 5 kN |
| Kommerzielle Spezifikation | |
| Zolltarifnummer | 85359000 |
| Ursprungsland | CH |
| Logistische Spezifikation | |
| Kilo / Stück | 0.186 kg |

